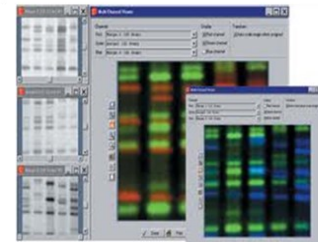


## Some of our Tools

- Polymer Analysis
- ♦ Protein Gel Imaging
- ♦ nanoHPLC
- ♦ 1D/2D SDS PAGE
- ♦ MALDI Imaging
- ♦ Protein Identification



## Some of our Tools

- ♦ Protein Extraction
- ♦ Robotic Spot Picking
- ♦ Metabolite Analysis
- ♦ MALDI Biotyping( Micro-organism Identification)
- ♦ Protein Separation



UNIVERSITY of the  
WESTERN CAPE

## Proteomics Research & Service Unit

*For your PROTEOMICS and related  
MASS SPECTROMETRIC Research  
Needs*

[CONTACT Details](#)

**Prof. Bongani Ndimba**  
Proteomics Research & Services Unit  
Department of Biotechnology  
University of the Western Cape  
Robert Sobukwe Road, Bellville, Cape Town,  
South Africa

Tel: 021 959 2215 ( 2648 direct)

Email: [bndimba@uwc.ac.za](mailto:bndimba@uwc.ac.za)

[NdimbaB@arc.agric.za](mailto:NdimbaB@arc.agric.za)

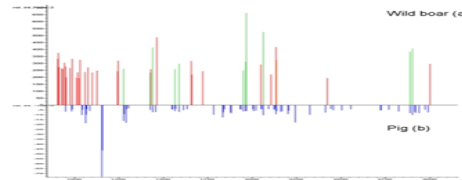
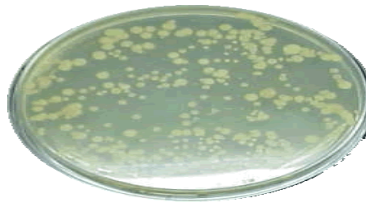
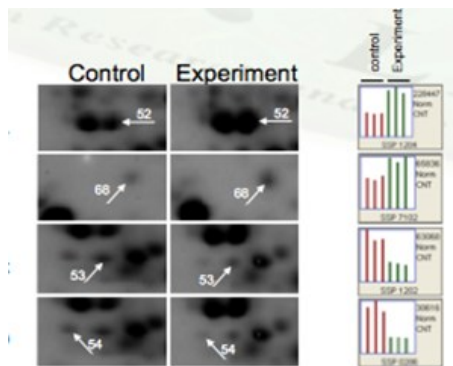
Website: [www.uwc.ac.za/Faculties/NS/  
Biotechnology](http://www.uwc.ac.za/Faculties/NS/Biotechnology)



## PROTEOMICS

### Applications include:

- Experimental Design
- 1D & 2D SDS PAGE
- Staining & Imaging
- Spot picking & Identification
- Data Analysis



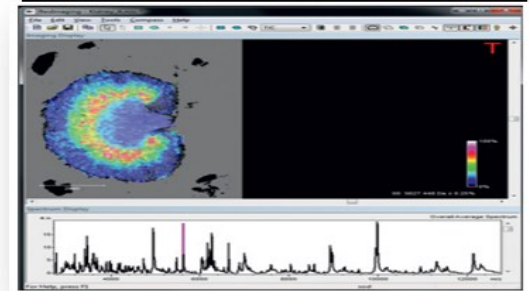
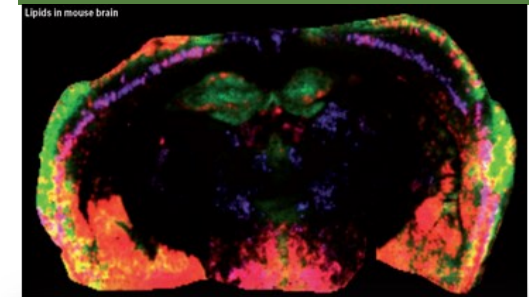
## BIO-TYPING

Our *MALDI Biotyper* enables molecular identification, and classification of microorganisms like bacteria, yeasts and fungi. This application is achieved reliably and quickly using proteomic fingerprinting by high-throughput MALDI-TOF mass spectrometry.

### Applications include:

- Research( Microbiology)
- Food Safety
- Diagnostics( Animals/Plants)
- Quality Control
- Sanitary Certifications etc.

## MALDI IMAGING



## Acknowledgments:



**National Equipment Programme (NEP)**